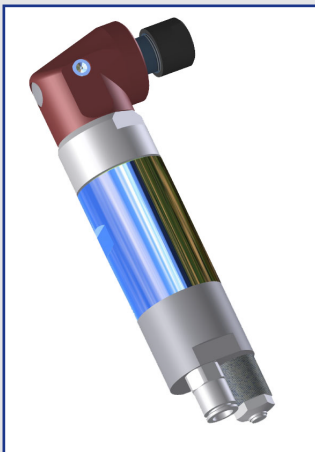
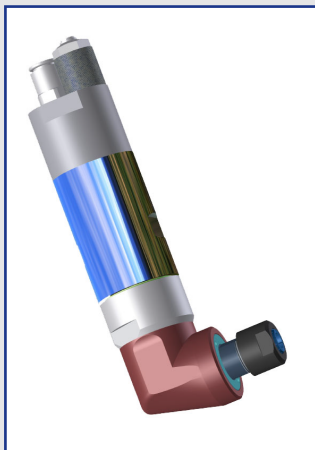


Air Motor

Languages > 

Compressed Air Motor MRDW38

Air Motor MRDW38
Item-No.: mrdw38

Application Area

Air Motor for Engine Construction as propulsion motor and motor for agitators for example in production facilities (printing machines, textile machines, roboting units)

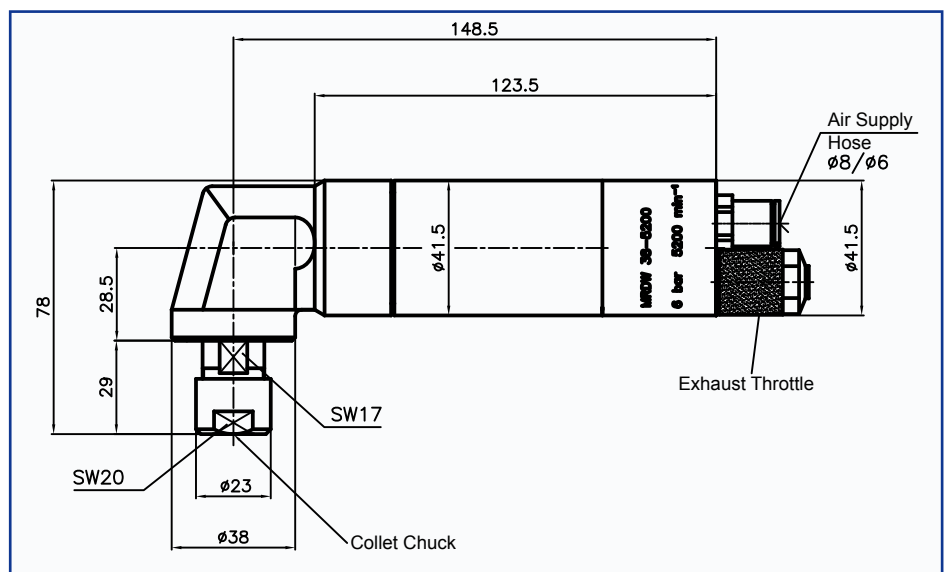
Product Description

- Can be applied in areas that require small dimension
- Also Ex-procted areas

Technical Data

Capacity :	0,38 kW
Rotary Direction :	Right
Oilfree:	Yes
Brake:	No
Available in ATEX	Yes
Loading Speed:	1100 rpm to 18000 rpm
Ambient Temperature:	-20 °C to + 100 °C
Material:	Stainless Steel

Dimension



* Changes and mistakes excepted, prices plus packing and VAT.